

Monitoring Steelhead Habitat & Water Quality in the Monterey Bay National Marine Sanctuary's Largest Watershed

Central Coast Watershed Studies (CCoWS) Team:

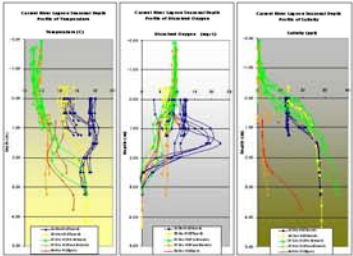
F. Watson, R. Curry, L. Pierce, D. Smith, T. Anderson, W. Newman, J. Casagrande, J. Hager, D. Kozlowski, J. Larson

CCoWS monitor quality of habitat for *Oncorhynchus mykiss irideus* (Steelhead) through:

• Stream reconnaissance

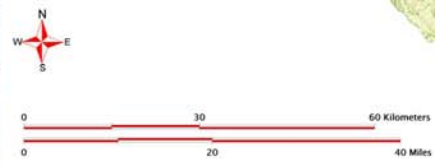


• Lagoon water quality monitoring

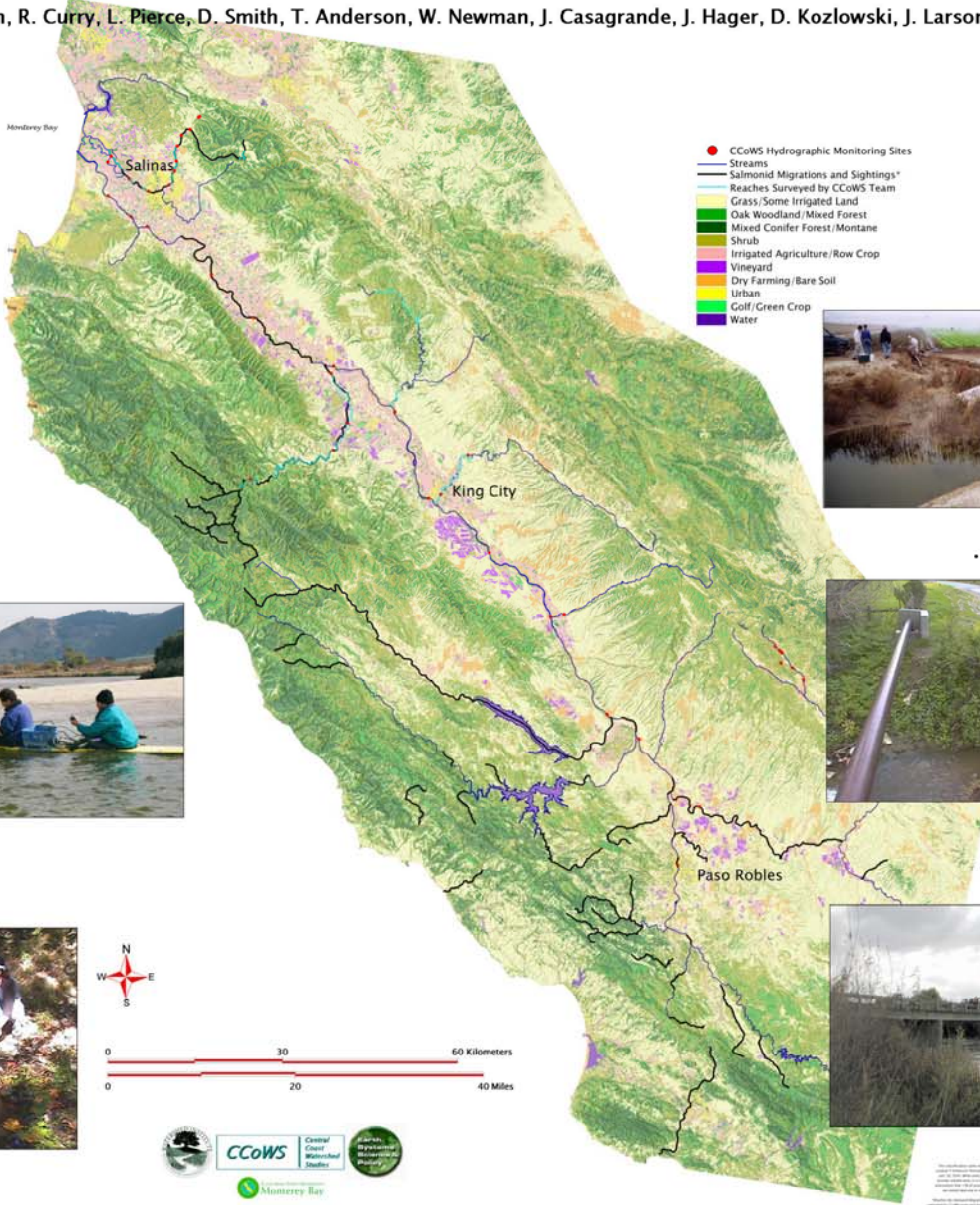


• Detailed Habitat and Population Assessment (e.g. Gabilan Creek)

Section ID	Length (mi)	Avg. Slope (ft/mile)	Avg. Depth (ft)	Avg. Pool Depth (ft)	Avg. Substrate	Depth (ft per pool)
Habitat 1	44.00	18%	25%	24	4100	1.8K
Habitat 2	14.00	14%	30%	18	1700	3.0K
Habitat 3	11.00	20%	30%	24	1100	1.4K
Habitat 4	21.00	30%	20%	22	1300	1.8K
Habitat 5	24.00	24%	18%	21	1000	1.7K



Funding for this work provided by California State Ocean Resources Council Board grant number 1-04-01-01-000-0000. 100 percent funding from CCoWS.



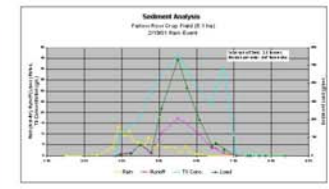
- CCoWS Hydrographic Monitoring Sites
- Streams
- Reaches Surveyed by CCoWS Team
- Grass/Some Irrigated Land
- Oak Woodland/Mixed Forest
- Mixed Conifer Forest/Montane
- Shrub
- Irrigated Agriculture/Row Crop
- Vineyard
- Dry Farming/Bare Soil
- Urban
- Golf/Green Crop
- Water

CCoWS monitor water quality parameters:

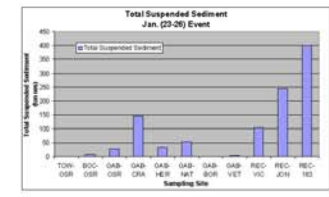
- Nutrients
- Pathogens
- Pesticides
- Sediments

On various scales:

• Field (row crop, vineyard)



• Small watershed (e.g. Gabilan Creek)



• Large watershed (e.g. Salinas Valley)

